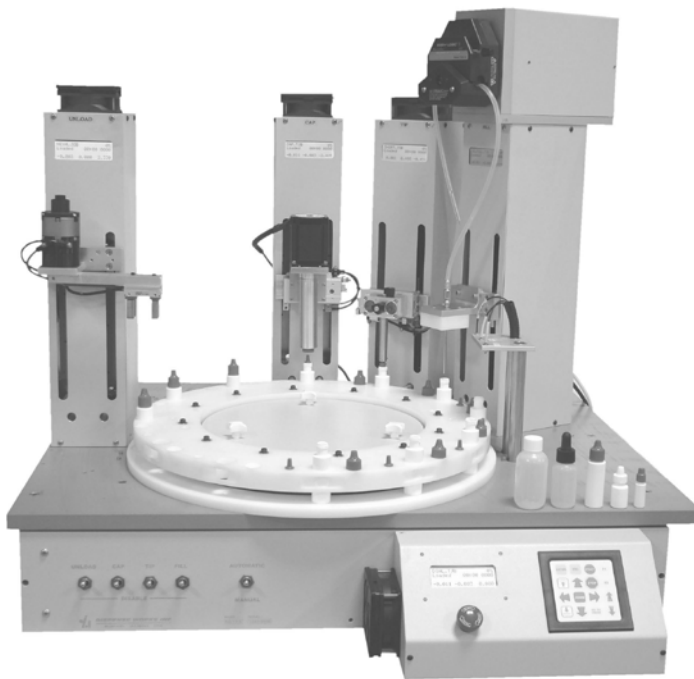


RING DEX Bench Top Automation



Filling - Tipping - Capping - Weighing - Assembly Systems



A Smart Solution



Modular Design

The Ring Dex system provides a unique solution for streamlining your manual filling, tipping, capping, weighing and assembly operations with one precise and affordable bench top package.

The machine consists of work stations mounted around a centrally located indexing ring.

A Logical Concept

A programmable high speed (and safe) indexing ring is used to index your product, thru the stations, performing the required operations.

- Pre Programmed Station Cycles
- Smooth & Quiet Operation
- Look Ahead Motion Technology

Dials are removable for quick changeover. Great for processing families of small bottles & vials.

Our exclusive "Soft Torque" dial stops if any external resistance is met, for safety.

Latest Embedded Technology

Each work station is self contained and includes an embedded processor and CF memory card for true multi-tasking & real time performance. The base machine and stations are internally network connected for speed & reliability. The Ring Dex is menu driven and may be controlled from the front panel touch pad /LCD or the "virtual pendant" on your PC. A bar code scanner input is included as well.

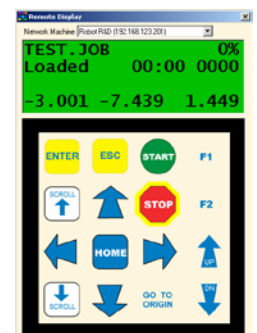
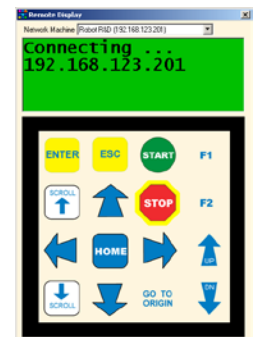
A True File Based Solution

The obvious advantages of a file based system:
"Your machine will be better tomorrow than it is today"
The ability to upgrade the machine's software by downloading a single file, ensures that your investment will be as prudent as it is productive.

The Operator's Choice

Just press the foot pedal. Your operators will appreciate the ergonomics and ease of use with the machine's setup, its calibration and file management systems. Your techs will love the zero maintenance, machine tool quality construction.

**Network
Connectivity**



Just Fill In the Blanks

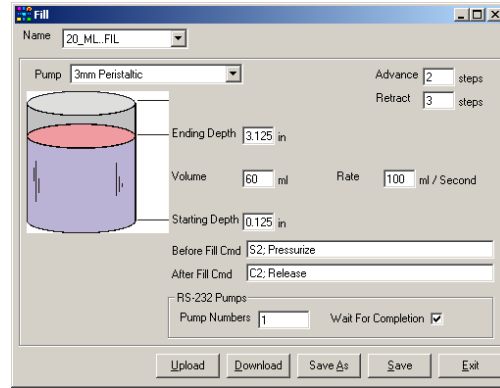
Built-In Digital Pump Control

Advanced Filling Performance

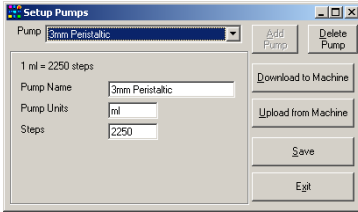
Fill files control the peristaltic (or positive displacement) pump with simple menu entry:

- Volume
- Position
- Diving nozzle
- Snuff-back
- Logic (additional)

A limitless number of Fill files may exist in the machine. Just save or save as. Ideal for future expansion.

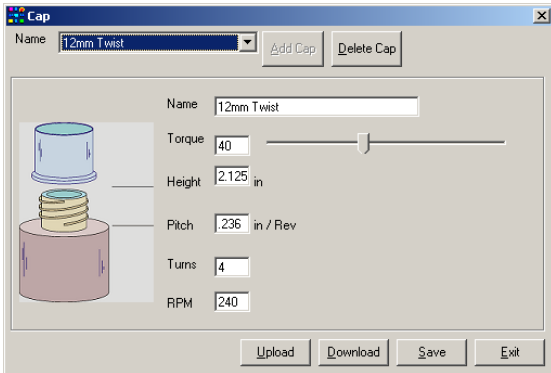


On Board Pump Calibration



Allows calibrating the peristaltic pump with the system controls. Just enter the actual weight from a sample. Automatically adjusts all encoder values. Several pump files may exist for different tubing sizes, nozzles, etc.

3mm Peristaltic
 Expect: 45.00
 Actual: 44.98
 Calibrate (Y)

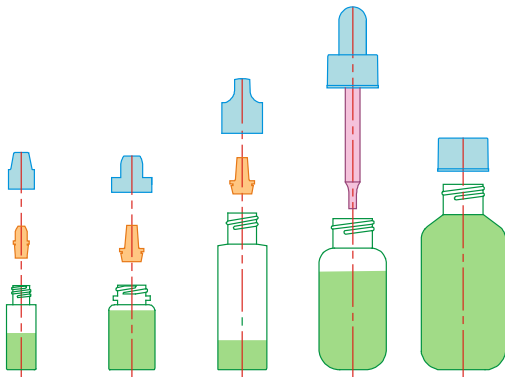


Control Capping Torque & Cap Pitch

Cap files control the station with simple menu entry of pre-programmed parameters:

- Bottle height
- Cap thread data
- RPM & number of turns
- Torque

A limitless number of Fill files may exist in the machine. Just save or save as. Ideal for future expansion

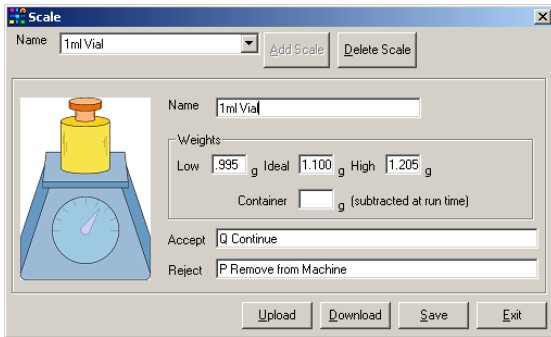


Ideal For Screw-on or Snap-fit Caps

Containers may be processed with their caps screwed on or with the caps supplied loose. Software logic is included for either scenario.

Pre-Programmed Functions

Production History File



Verify & Record Your Fill Volumes Automatically

Scale files record each bottle's weight every cycle (auto tare) with ultra-precision. Scale is settable in: oz, gms, etc.

Product must weigh between set high/low values to pass.

A limitless number of Scale files may exist in the machine. Just save or save as. Accept / Reject commands may be typed into the form to trigger outputs, pauses, etc.

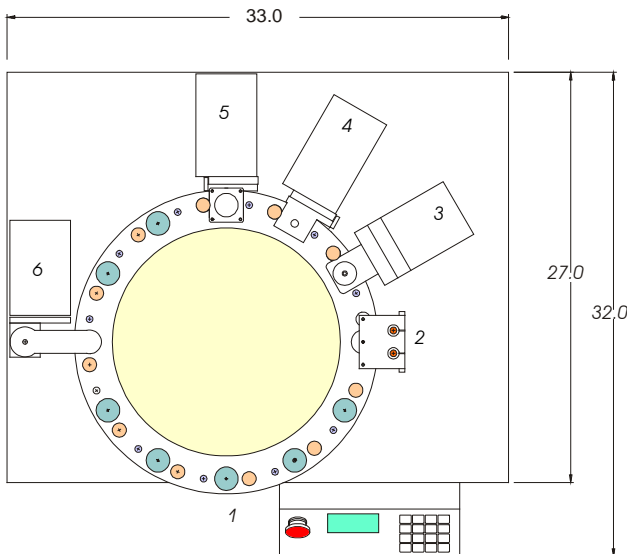
Track Production Data

Production logging information is stored after (& during) each cycle.

This includes the time/date stamped weight of each filled bottle / vial.

The History file may be accessed from the Windows Suite and then printed, copied into a report or saved as a spreadsheet file. Other "flags" such as a pause or any interruptions during production are tracked as well.

Date	Time	Job	Count	Run Time
01/13/04	00:17	THIS	#0004	00:06
01/13/04	00:15	0	#0005	00:10
01/13/04	00:14	THIS	#0001	00:10
01/07/04	22:54	TEXTJOB	#0001	00:16
01/07/04	22:54	LINVATRC	#0001	00:19
01/06/04	23:34	THIS	#0148	00:17
01/06/04	20:48	0	#0335	00:11
01/06/04	19:47	LIN	#0002	00:04
01/06/04	19:46	KEYBOARD	#0031	00:26
01/06/04	19:27	TEXTJOB	#0002	00:05
01/06/04	19:26	KEYBOARD	#0001	01:03
01/06/04	18:51	LIN	#0000	00:00
01/06/04	18:50	KEYBOARD	#0003	00:36
01/06/04	18:48	RG	#0001	00:05
01/06/04	18:47	010504-1	#0014	00:00
01/06/04	01:14	KEYBOARD	#0001	00:37



MODE OF OPERATION
 ← DUAL →

On Demand:

Press Touchpad (or foot pedal) to start the machine cycle. Operator controls the production rate.

Pace the Operator:

Machine is set to cycle every X seconds. After a time period, and with a soft "beep", the machine cycle begins.

Either way, if a missing part is detected, the machine will pause for the operator to load it and acknowledge to resume.

All systems (and software) are designed & manufactured in our clean, state of the art facility on modern CNC equipment to the industry's most stringent quality control.

Over 25,000 sq ft is dedicated to research / development & high tech assembly. The systems feature time proven designs with pre-engineered stations requiring minimal "custom" tooling for rapid deployment and years of reliability.