



Application Bulletin RP Brush



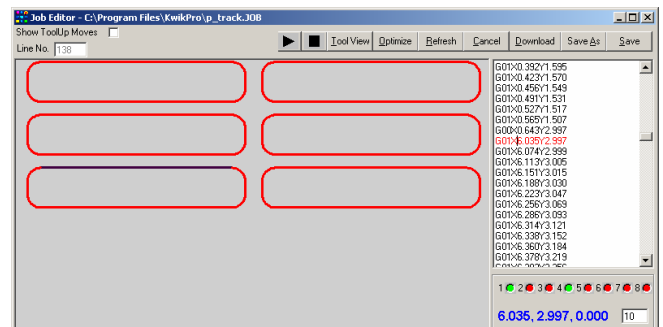
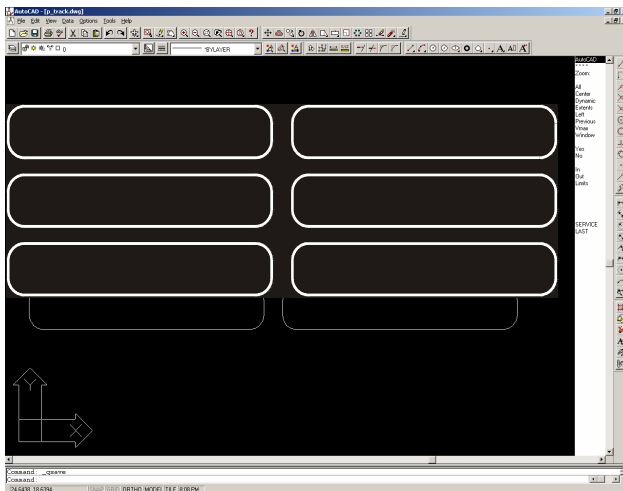
Smart Dispensing Solutions

The RP 2415 features an embedded control system that requires no PC for operation. It may be used to operate valves, syringes, pumps, hot melt glue guns, etc. Your product remains stationary, while the dispense head travels in a programmed path that accurately dispenses the material onto your product.

The solid machine bed includes pre tapped mounting holes for fixturing, tooling etc. The motion path may be defined with a DXF, PLT or G Code file or recorded with the built-in advanced Jog & Teach function!

The Most Versatile Dispensing Solution Available Today

Shown with the 6oz material cartridge and UV valve with a brush tip for applying exact amounts of sealant to the bottom & inside walls of a machined groove in a steel mold.



No Programming Required.
Just "Draw" your path in CAD
and import into our software!