



# Application Bulletin 3636



## Find & Plug Honeycomb Cells

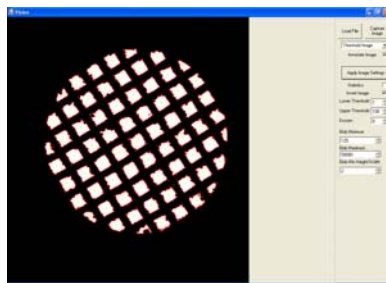
Custom designed system using all DW Inc mechanics and software to plug cells in a ceramic honeycomb component.

### Flatbed Scanner Used for Vision

Our standard vision software was used along with a scanner that would be used to find centers of each cell.

Part shuttles into scanner area to record the image of its cells.

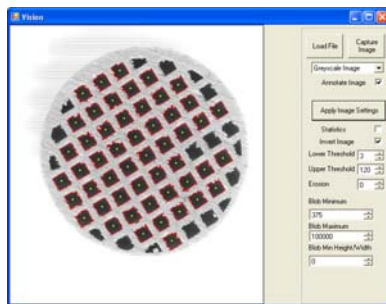
Constructed from standard Dispense Works components and software / controls.



### Converts Image to Positions

Image from scanner is imported into the vision software.

Cells are outlined to allow the algorithm to find the center of mass or "blob".



Centers are automatically defined and "marked" on the image. These get converted to the program X and Z center positions.

All the above happens automatically and executes in milliseconds

