



Application Bulletin 3628



Tooth Whitening Gel Fill/Assembly

Automates 5 component assembly:

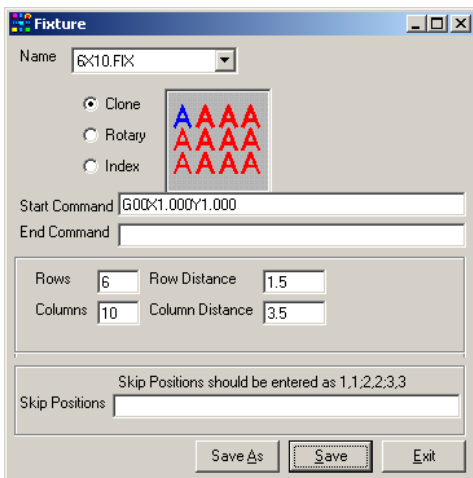
- Fill gel into dispenser body
- Press fit applicator brush into body
- Snap on over cap
- Apply date coded label to bottom of body
- Stack finished assembly back into nest

The RP robot was chosen as the ideal platform. Precision ball slides and leadscrews result in machine tool quality performance with high speeds (20in/sec) and payloads (100lbs).

Embedded dual memory processor with CF Card requires no PC for operation, and provides all preprogrammed software functions for filling, assembly, positioning etc.

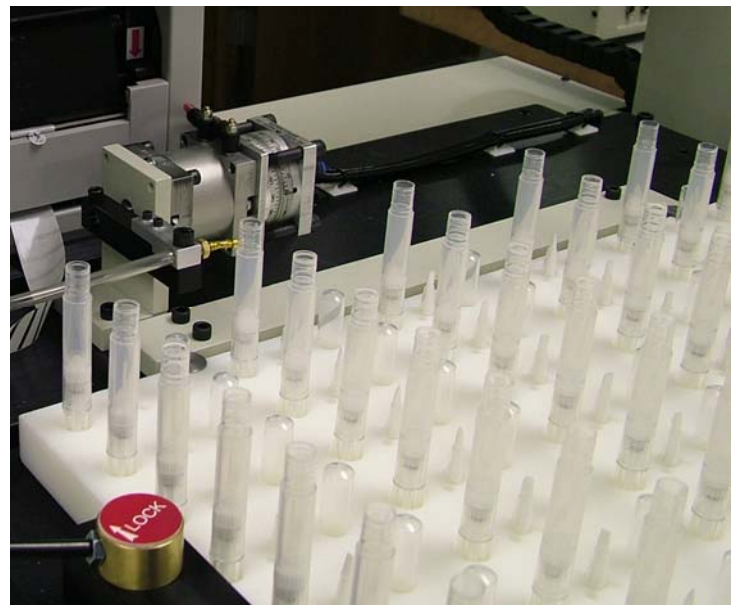
The RP2415 Production Robot

Tooled with Fill Valve, Dual Press Head, Labeler/Printer module, 5 gal pressure pot



Easy to use & understand software with pre-programmed functions for dive filling, motion path, capping, cloning, etc.

Changing over to different volumes or positions means just loading a new file.
It really is that simple!



2 Pallets streamline your production allowing the operator to load / unload parts during the machine cycle