



Application Bulletin 3603



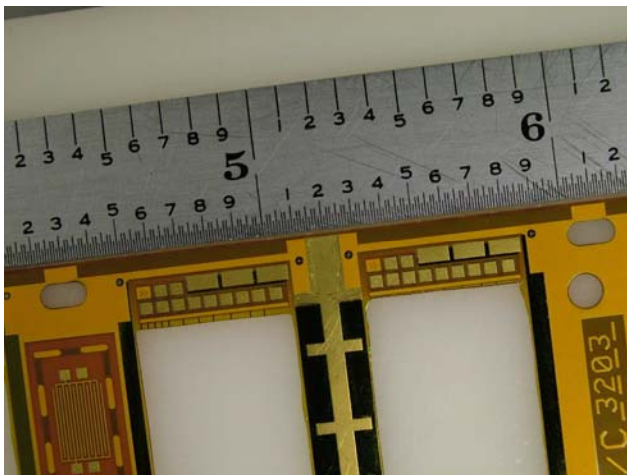
The Popular RP-1215 Robot

Applying Epoxy to Flex Circuit

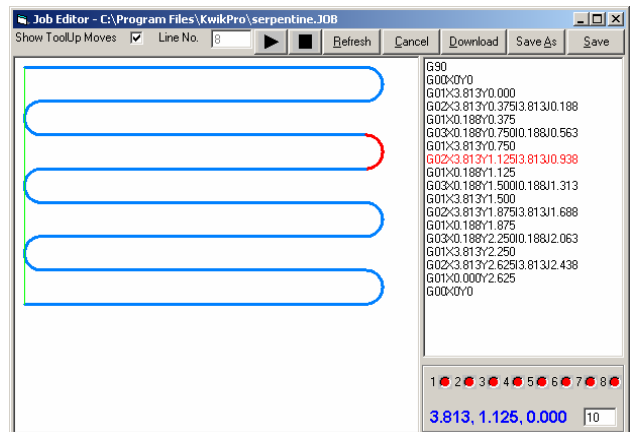
One part epoxy application to special circuit printed on kapton material.

Several miniature fiducial targets are registered by the vision system with a highly magnified lens. The image on the screen is a 0.015" cross hair pattern magnified 50 times.

Input and outputs are provided to interface with peripheral equipment such as conveyors, dial indexers etc.



Close up of 0.015" diameter target area.



Automatic path generation of fills, dots, etc.