



# Application Bulletin 3601

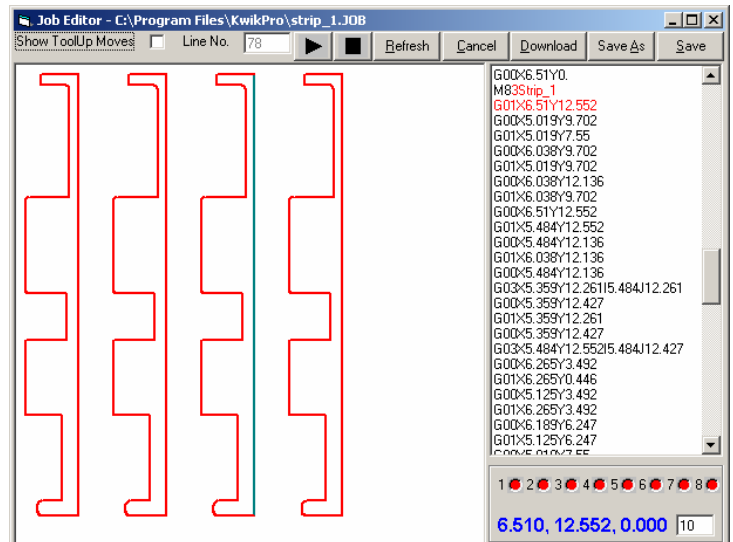
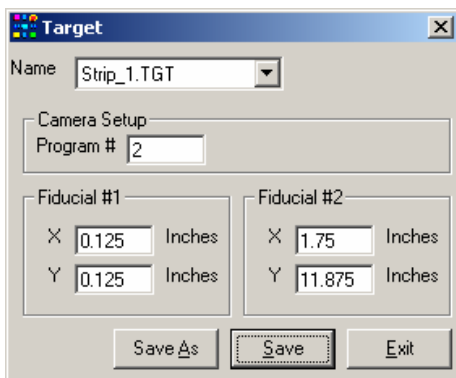


Camera with Pattern Recognition

Precision diaphragm valve, 6 or 12oz. cartridge holder and a vision system provide an ideal workcell to precisely apply cyanoacrylate to fixtured components.

An optional full size (removable) vacuum chuck neatly fits onto the standard mounting hole pattern of the RP robot and allows quick fixturing for parts consisting of different geometries by just using pins!

The vision system is used to register holes, dots, edges etc of the parts to precisely dispense the material along the proper edges.



### Limitless Number of Camera Target Files

Camera setup allows 16 different target files to be stored at one time and then retrieved from the touchpad or directly through the commands in the program file!