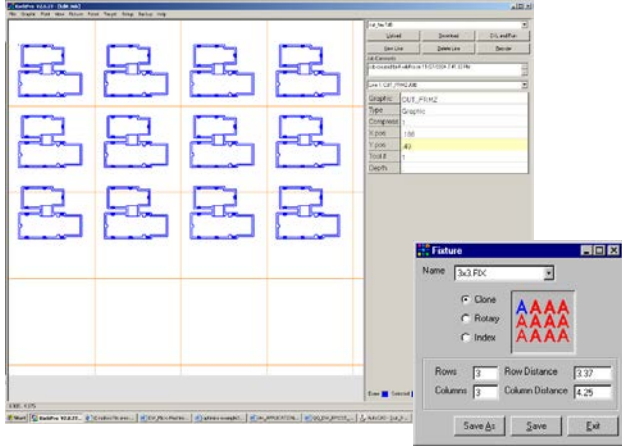


RT-3636 Router Machining System



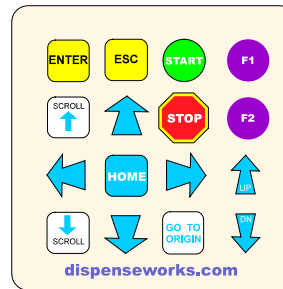
Dozens of Enhanced Functions!

Cloning is one of the many time saving and machine streamlining features that are included in the Windows Suite control package.

SEALMSTR.TJB	92%
Running	#0016
Run Time=00:14	
00.236 01.816 00.125	

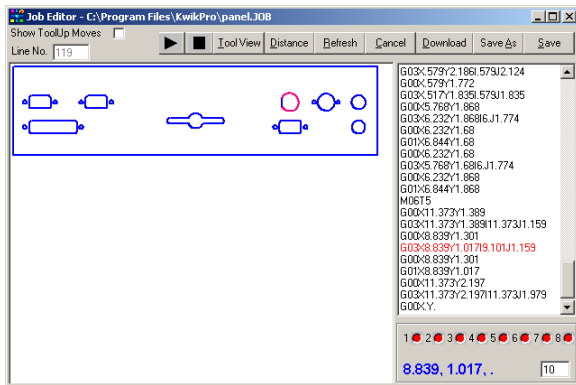
Bright LCD Display

Shows real time machine status and includes batch counter, cycle timer, % of completion



Operator Interface

The 16 key touchpad provides the intuitive operator interface along with one touch functions for easy operation.



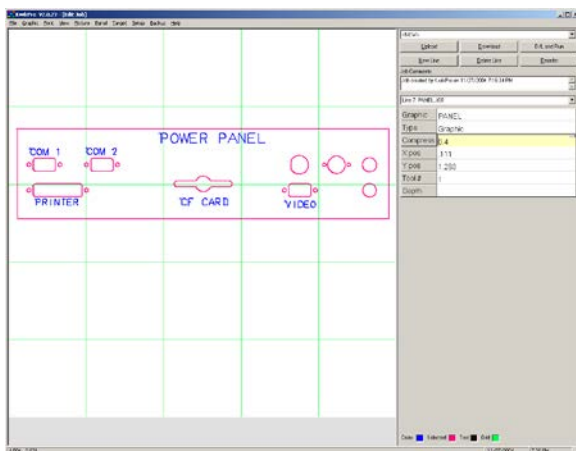
Date	Time	Job	Count	Run Time
01/08/15	00:21	areteach.TJB	0001	00:21
01/08/15	04:06	golftee.TJB	0001	00:25
01/07/15	00:24	COOPER.TJB	0001	00:22
01/06/15	00:21	areteach.TJB	0001	00:21
01/05/15	04:06	newlife.TJB	0001	00:25
12/30/14	03:09	BHINC.TJB	0004	00:27
12/30/14	03:06	victory.TJB	0001	00:06
12/30/14	03:03	BL.TJB	0010	00:07
12/29/14	00:51	TRE.TJB	0001	00:18
12/28/14	00:49	JACK.TJB	0001	00:10
12/24/14	00:46	Express.TJB	0020	00:04
12/20/14	00:04	newlife2.TJB	0001	00:21
12/16/14	06:49	TIA.TJB	0001	00:17
12/16/14	05:46	4DIS.TJB	0002	00:39
12/15/14	05:38	orca.TJB	0001	00:13
12/06/14	05:34	TUB.TJB	0001	00:10

Detailed History Function!

A convenient history function displays detailed production information at the touch of a button.

View Edit and Simulate!

In addition to the Jog & Teach routines, create the path in your CAD or graphics software. Import direct from .DXF .PLT or G-Code files. Also includes drivers for Engrave / Sign Lab.



Add Alpha-Numerics To Your Part !

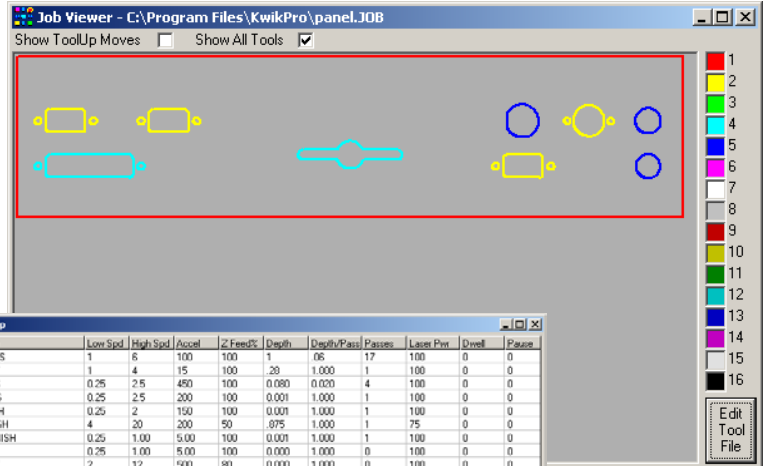
The on board text generator allows adding part numbers, incremental serial numbers and date/time codes to a part very quickly in the same file without any complex modification.





Control Path by Color

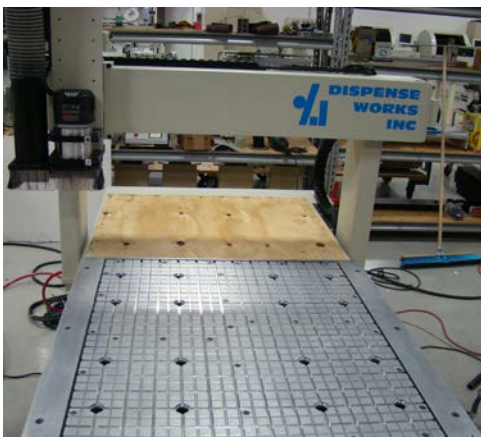
Full layer and color support for effortless setup and control requiring no programming experience. Tool file with 32 independent tools per file or 3-D machine operation.



Name	Low Spd	High Spd	Accel	Z Feed%	Depth	Depth/Pass	Passes	Layer Prt	Overl	Passes
1 HOLES	1	6	100	100	1	.06	17	100	0	0
2 SPLIT	1	4	15	100	.20	1.000	4	100	0	0
3 ENDS	0.25	2.5	450	100	0.080	0.020	4	100	0	0
4 SIDES	0.25	2.5	200	100	0.001	1.000	1	100	0	0
5 FINISH	0.25	2	150	100	0.001	1.000	1	100	0	0
6 ROUGH	4	20	200	50	.375	1.000	1	75	0	0
7 BURNISH	0.25	1.00	5.00	100	0.001	1.000	1	100	0	0
8 FECK	0.25	1.00	5.00	100	0.000	1.000	0	100	0	0
9 SLICE	2	12	500	80	0.000	1.000	0	100	0	0
10 Tool #10	0.25	1.00	5.00	100	0.000	1.000	0	100	0	0
11 Tool #11	0.25	1.00	5.00	100	0.014	1.000	1	100	0	0
12 Tool #12	3.00	10.00	5.00	100	1.000	1.000	1	100	0	0
13 Tool #13	0.25	2.00	0.00	100	0.000	1.000	0	50	0	0
14 Tool #14	0.25	1.00	5.00	100	0.250	1.000	1	100	0	0
15 Tool #15	0.25	1.00	5.00	100	0.250	1.000	1	100	0	0
16 Tool #16	0.25	1.00	5.00	100	0.250	1.000	1	100	0	0

Unlimited Program Size and Storage

The on board processor requires no external PC for operation. The Compact Flash Card stores all job files, tool files, setup parameters etc. Limited only by its capacity.



No Aluminum Extrusions Here

Manufactured from 3/8" wall, 8" wide steel tubing ground flat & square. Constructed with pre-loaded ball slides for machine tool like performance. Several base plates including T slot and vacuum bed are available.



4071 Albany Street
McHenry, IL 60050

info@dispenseworks.com
www.dispenseworks.com

815-363-3524
Fax: 363-8089